

6. The backing of a school bus at a passenger loading stop shall:

- a. Be done before dropping students off at that location
- b. Be done only if another school bus driver is present.
- c. Be done after dropping students off at that location.
- d. Not to be done under any circumstances.

7. The _____ is the drivers tool to determine whether or not a child is directly in front of the bus.

- a. The interior rearview mirror.
- b. The left and right flat mirrors.
- c. The side convex mirrors.
- d. The cross-view mirror.

8. Explain when the pupil becomes the responsibility of the school bus driver?

9. List the three prohibited school bus stops.

1. _____

2. _____

3. _____

10. Explain what stops are required to be approved by the California Highway Patrol.

11. Upon approach to a bus stop the driver shall activate the 'Amber" warning Lights _____ feet prior to the stop, activate the right turn signal _____ feet prior to the stop, and when reaching the stop shall activate the red warning lights_____.
- a. 150, 100, immediately.
 - b. 200, 100, immediately.
 - c. 200, 100, only when safe to do so.
 - d. 200, 100, as soon as the door opens.

12. When approaching a school bus stop, the driver shall not stop closer than ____ to the nearest child at the stop.

- a. 2 feet
- b. 4 feet.
- c. 6 feet
- d. 10 feet.

13. What are the steps that a school bus driver needs to accomplish prior to leaving the drivers compartment.

14. Explain what the handrail, drawstrings and toys issue is all about?

15. List 5 locations where the school bus driver may not activate the amber warning lights System, the flashing red light system and stop signal arm:

1. _____

2. _____

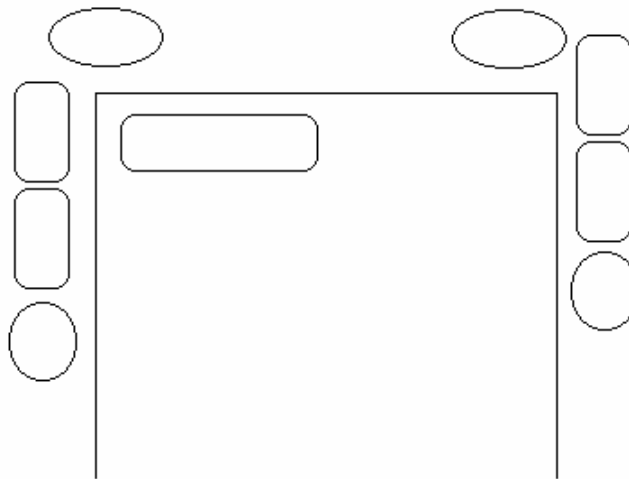
3. _____

4. _____

5. _____

16. A bus stop where students must cross is located on a corner where there is a traffic control signal and a crosswalk, the bus driver:
- a. Must activate the flashing red light signal system and escort students across the road using the crosswalk.
 - b. Shall not activate the flashing red lights, students must cross themselves.
 - c. Shall not stop within 200' of an intersection.
 - d. Should go around the block and drop students on the other side.

17. Using the five count mirror procedure, number the mirrors in the order that you would instruct your trainee during the departure from a school bus stop.



18. Use the diagram above. Explain what you would look for in each mirror during the departure from a school bus stop.

Left Flat Mirrors and convex: _____

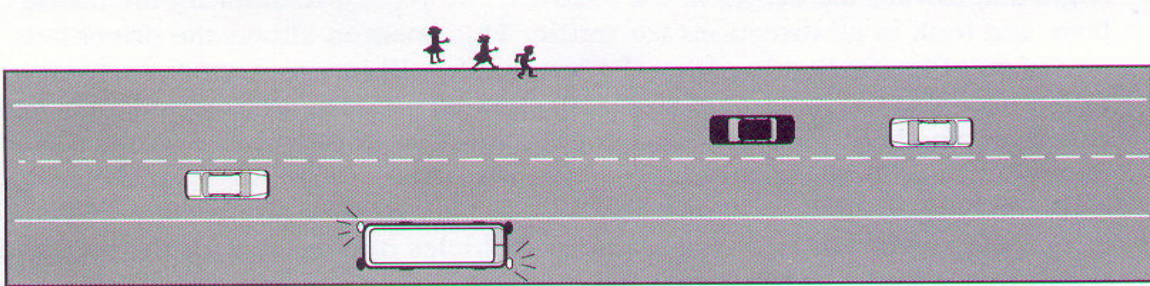
Right Flat Mirrors and convex: _____

Passenger or Interior Rear View Mirror: _____

Cross-view Mirrors: _____

19. When you are escorting children across a roadway, when are you required to use the hand held stop sign:
- a) all elementary age pupils
 - b) all high school age pupils
 - c) all pupils pre-kindergarten, kindergarten, or any grades 1 to 8
 - d) always

20. Indicate with an X and an Arrow where in the roadway you would have a trainee stand and the direction the trainee would face during this red-light escort.



21. Explain using the above diagram the procedure for the red-light escort as you would instruct a trainee. Begin the instruction as the bus approaches the stop from 200 feet.

22. The driver of a school bus shall not eject any school pupil unless the pupil is given into the custody of a parent of any person designated by the:
- a: California Highway Patrol and the Department of Education
 - b: California Highway Patrol and the school district superintendent
 - c: California Highway Patrol and the president of the PTA
 - d: School district or the parent
23. In a business or residential district where the speed limit is 25 mph or less, a driver of a school bus is prohibited from stopping the bus on the roadway side of any vehicle stopped, parked or standing at the curb or edge of highway except when:
- a. To stop and discipline students
 - b. Stopping to load and unload pupils
 - c. The driver is unable to find a parking space
 - d. Safe and visibility is a minimum of 500 feet in both directions of the stopped vehicle
24. When a school bus is stopped to pick up students on a roadway where there is multiple lanes in both directions or a center divider the traffic approaching the bus:
- a. Is not effected because the red lights are exempt.
 - b. Does not have to stop for the flashing red lights.
 - c. Must clear before the driver activates the flashing red lights.
 - d. May not pass the school bus until the lights are canceled.
25. List 3 of the objectives for Skills Level 5, Passenger Loading and Unloading Procedures.
